

AIS500

AUTOMATIC IDENTIFICATION SYSTEM

AUTOMATIC IDENTIFICATION SYSTEM

AIS500 Transceiver

ProAIS User Manual

Raymarine®

GENERAL WARNINGS

All marine Automatic Identification System (AIS) units utilise a satellite based system such as the Global Positioning Satellite (GPS) network or the Global Navigation Satellite System (GLONASS) network to determine position. The accuracy of these networks is variable and is affected by factors such as the antenna positioning, how many satellites are used to determine a position and how long satellite information has been received for. It is desirable wherever possible therefore to verify both your vessels AIS derived position data and other vessels AIS derived position data with visual or radar based observations.

The proAIS application is intended for use as an installation and configuration tool. **The application is not a navigation tool and should not be used as such.**

LICENSING

IMPORTANT: In most countries the operation of an AIS unit is included under the vessels marine VHF licence provisions. The vessel on to which the AIS unit is to be installed must therefore possess a current VHF radiotelephone licence which lists the AIS system and the vessel Call Sign and MMSI number. Please contact the relevant authority in your country for more information. In accordance with a policy of continual development and product improvement the AIS500 hardware and software may be upgraded from time to time and future versions of the AIS500 may therefore not correspond exactly with this manual. When necessary upgrades to the product will be accompanied by updates or addenda to this manual. Please take time to read this manual carefully and to understand its contents fully so that you can install and operate your AIS system correctly. Information contained in this manual is liable to change without notice. Software Radio Technology plc disclaims any liability for consequences arising from omissions or inaccuracies in this manual and any other documentation provided with this product.

DISCLAIMER

THIS SOFTWARE IS PROVIDED BY THE COPYRIGHT HOLDERS AND CONTRIBUTORS "AS IS" AND ANY EXPRESS OR IMPLIED WARRANTIES, INCLUDING, BUT NOT LIMITED TO, THE IMPLIED WARRANTIES OF MERCHANTABILITY AND FITNESS FOR A PARTICULAR PURPOSE ARE DISCLAIMED. IN NO EVENT SHALL THE COPYRIGHT OWNER OR CONTRIBUTORS BE LIABLE FOR ANY DIRECT, INDIRECT, INCIDENTAL, SPECIAL, EXEMPLARY, OR CONSEQUENTIAL DAMAGES (INCLUDING, BUT NOT LIMITED TO, PROCUREMENT OF SUBSTITUTE GOODS OR SERVICES; LOSS OF USE, DATA, OR PROFITS; OR BUSINESS INTERRUPTION) HOWEVER CAUSED AND ON ANY THEORY OF LIABILITY, WHETHER IN CONTRACT, STRICT LIABILITY, OR TORT (INCLUDING NEGLIGENCE OR OTHERWISE) ARISING IN ANY WAY OUT OF THE USE OF THIS SOFTWARE, EVEN IF ADVISED OF THE POSSIBILITY OF SUCH DAMAGE.

This software uses components and source code developed by other companies or groups.

Microsoft .Net Framework V2.0:
Copyright © 2005 Microsoft Corporation

ZedGraph Graphing component dll (<http://zedgraph.org>):
Provided under the GNU Lesser General Public License

All trademarks mentioned in this document are the property of their respective owners.
Copyright © 2009

Contents

Installation guide	5
Prerequisites	5
Setup	5
Removal	5
User guide	6
AIS Connection	6
Static Data Tab	9
GPS Status tab	12
Diagnostics tab	13
Serial data tab	15
Software update tab	16
Other vessels tab	17
Binary messages tab	18
Commands tab	19
Troubleshooting guide	21

Installation guide

Prerequisites

The proAIS application is designed to operate with Microsoft Windows 200, XP and above. Recommended minimum system requirements are:

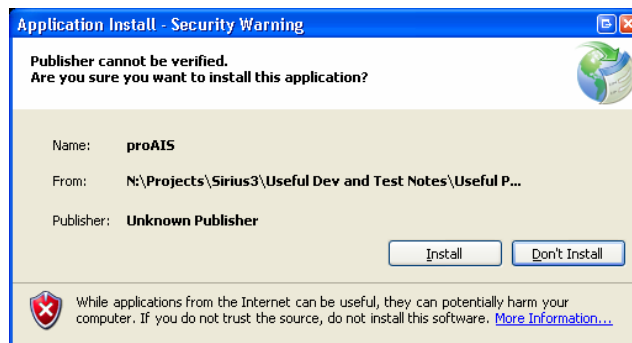
- Microsoft Windows XP SP2.
- Display resolution of at least 1024 x 768.
- At least one RS232 serial port (or USB to serial converter already installed*).

**If you are using a USB to serial converter please ensure this is fully installed before proceeding.*

This software uses the Microsoft .Net Framework V2.0. The framework will be automatically installed during setup if not already present on the system.

Setup

1. Insert the installation CD and locate the Setup.exe file.
2. Double click the Setup.exe file to begin the installation.
3. Follow on screen prompts to install the .Net framework if required.
4. When the security warning below is displayed, select 'Install'.



5. The application will install and launch automatically.
6. A Start Menu folder and shortcut will be created with the name 'proAIS'. This short cut should be used to re-launch the application as required.

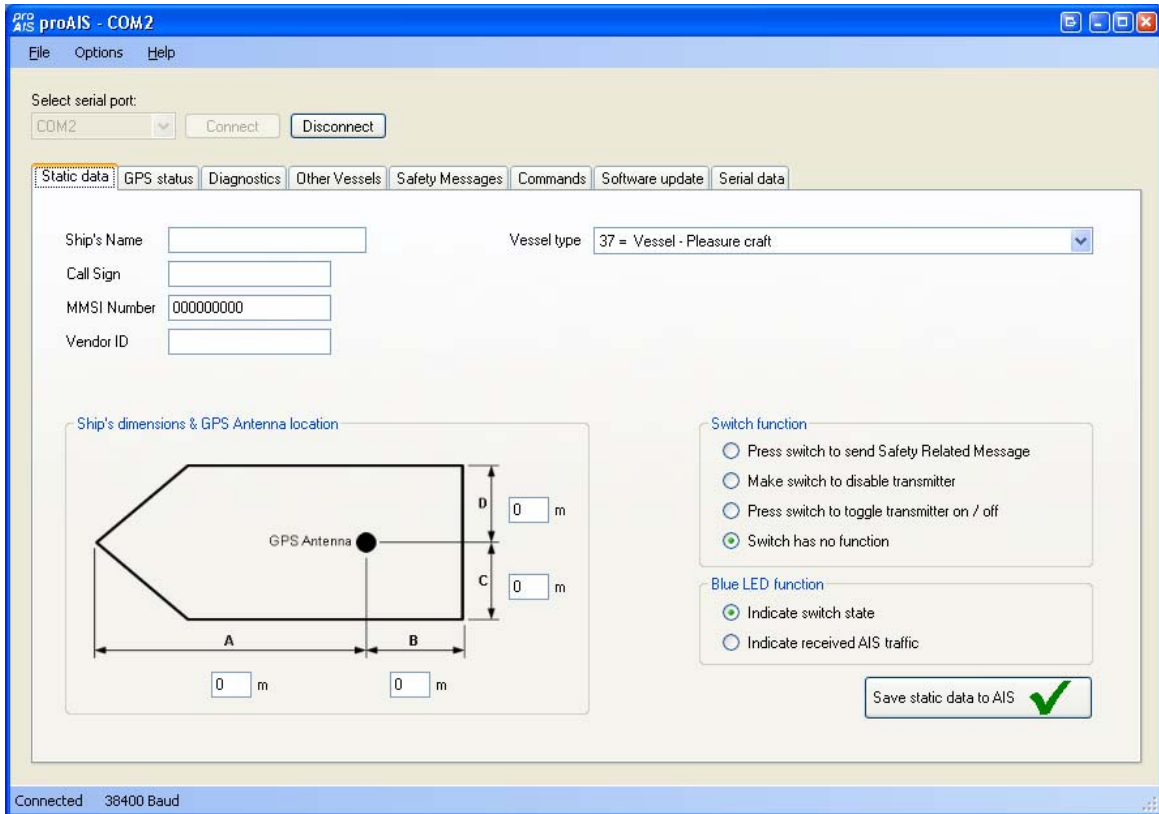
Removal

The proAIS application can be removed at any time via the windows Control Panel 'Add or Remove Programs' tool.

User guide

AIS Connection

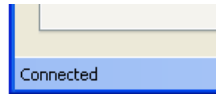
1. Launch the proAIS application by navigating to the 'proAIS' shortcut on the Start Menu.
2. The initial application screen will appear as shown below (exact screen display depends on version installed).



3. The application requires a serial connection to an AIS500 Transceiver. Connect the Transceiver to an available serial port.
4. Select the serial port from the drop down menu, then click 'Connect':



5. Once a connection is established the application is ready to use. Connection status is indicated at the bottom left of the application window:



6. The functions of proAIS are arranged in a series of tabs. Each tab contains information relating to a particular aspect of the connected AIS Transceiver. Depending on the version of proAIS installed not all tabs shown below may be visible.



- **Static data tab**
 - Displays the 'Static data' for the connected AIS Transceiver. This includes the vessel's name, call sign, MMSI number and other fixed information.
 - Allows editing of the static data.
- **GPS Status tab**
 - Shows the status of the internal GPS receiver, including position fix data and satellite signal strength graph.
- **Diagnostics tab**
 - Shows the status of key system diagnostics. Used to troubleshoot installation of the Transceiver and verify correct operation.
- **Other Vessels tab**
 - Shows information about other vessels in the area received from the AIS Transceiver.
- **Safety messages tab**
 - Displays safety related messages received from other AIS equipped vessels.
- **Commands tab**
 - Provides access to software controlled features of the AIS500 Transceiver.
- **Serial Data tab**
 - Shows the raw NMEA serial data being generated by the Transceiver.
 - Provides a facility to log this data to a file for later analysis.
 - Allows NMEA commands to be sent to the Transceiver.
- **Software update tab**
 - Provides facilities to upgrade the Transceiver software from an update file.

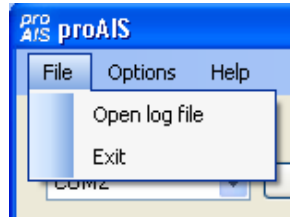
Subsequent sections describe the functions of each tab in more detail.

Menu Bar

The menu bar provides basic program options.

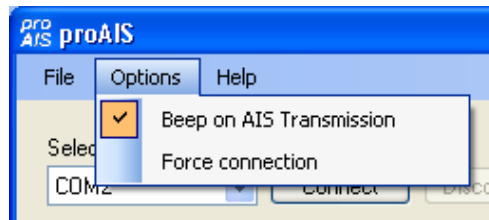
Under the 'File' menu the 'Open log file' option allows playback of a log file previously recorded using proAIS. A log file can be recorded using the tools provided on the 'Serial Data' tab. During log file playback only data recorded in the log is available and most buttons in the application will be inoperative.

The 'Open log file' option is not available whilst a serial connection is made. Please disconnect from the AIS Transceiver to enable this option.



Under the 'Options' menu item checking 'Beep on AIS Transmission' will cause the PC to emit a sound every time the connected AIS unit transmits.

The 'Force connection' option is used for diagnosing connection issues and should be left unselected. This feature should be used under guidance from your technical support contact.

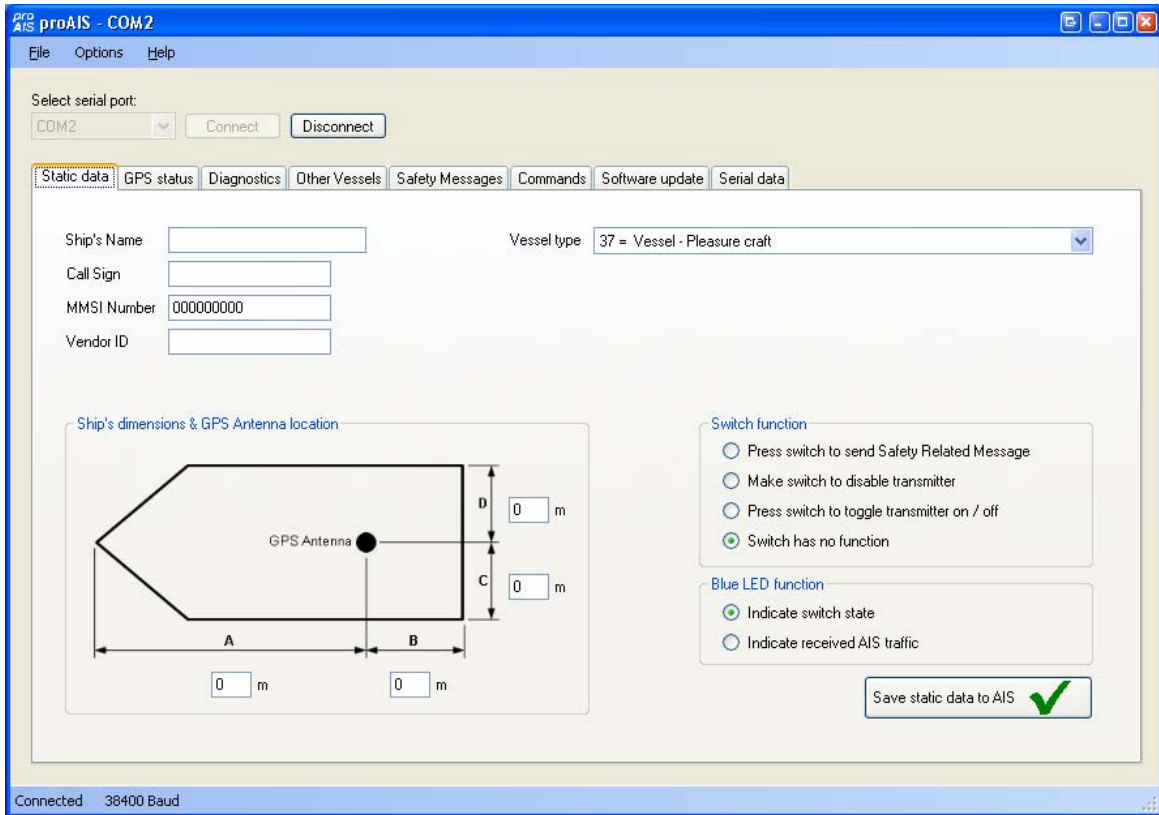


The Help -> About menu item displays the program splash screen and version information.

Static Data Tab

This tab shows the current configuration of the AIS Transceiver and allows the configuration to be programmed during installation into a vessel.

When an un-configured AIS Transceiver is connected for the first time the display will be similar to that shown below:



Configuring the Transceiver

To configure the Transceiver all of the data fields must be completed and saved to the AIS.



CAUTION:

For security reasons the MMSI of the vessel cannot be changed once programmed. Do not programme the MMSI unless you are certain you have the correct information. Please check the number entered carefully. If the MMSI programmed is incorrect the AIS Transceiver will need to be returned to the supplier for factory reset.

Configuring the Transceiver continued...

Enter the vessels information in the appropriate box:

- Ship's name - enter the name of the vessel (20 characters maximum).
- Call Sign - enter the vessel's radio call sign (7 characters maximum).
- MMSI number - enter the vessel's Maritime Mobile Service Identity number.
- Enter the vessels dimensions as follows:
 - Dimension A - distance from bows to GPS antenna location to the nearest meter.
 - Dimension B - distance from the GPS antenna location to the stern to the nearest meter.
 - Dimension C - distance from the port side to the GPS antenna location to the nearest meter.
 - Dimension D - distance from the GPS antenna to the starboard side to the nearest meter.
- Select the most appropriate vessel type from the drop down menu.



CAUTION:

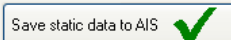
If no MMSI is entered (MMSI is set to 000000000) then the AIS Transceiver will operate in receive only mode. The vessels own position will not be transmitted. An MMSI must be entered to allow the AIS Transceiver to transmit its own position to other vessels.

Select the switch functions you require. Depending on your software version some options may not be available. Some units may not be fitted with a switch in which case this section of configuration can be skipped

- Select the "Press switch to send Safety Related Message" option if you want to configure the unit to transmit an AIS "Safety Related Message" when the switch is pressed. The switch must be pressed for two seconds to initiate this message which is broadcast with the vessels MMSI and the text "MAYDAY MAYDAY". Please note this should not be considered as a primary means of distress call.
- Select the "Make switch to disable transmitter" option if you will use an external latching switch for "Silent mode" control. Whilst the switch is closed the transmitter is disabled and other vessels will not receive your position via AIS. The receiver remains operational. The amber LED will illuminate to indicate the transmitter is disabled.
- Select the "Press switch to toggle transmitter on / off" if you will use a push button switch to toggle "Silent mode" on and off. The switch must be held for two seconds to toggle the transmitter off or on. When the transmitter is disabled other vessels will not receive your position via AIS. The receiver remains operational. The amber LED will illuminate to indicate this transmitter is disabled.
- Select the "Switch has no function" option if you will not use a switch to control "Silent mode" or transmission of a Safety Related Message.

Select the function of the blue LED indicator you require.

- Select the "Indicate switch state" option if you want the blue LED to illuminate when the a Safety Related Message has been transmitted or when the unit is in "Silent mode" following use of the switch as described above.
- Select the "Indicate received AIS traffic" if you want the blue LED to flash each time an AIS report from another vessel is received.
- **When you have entered all of the vessel's data click the 'Save static data to AIS' button to programme this configuration into the AIS Transceiver:**



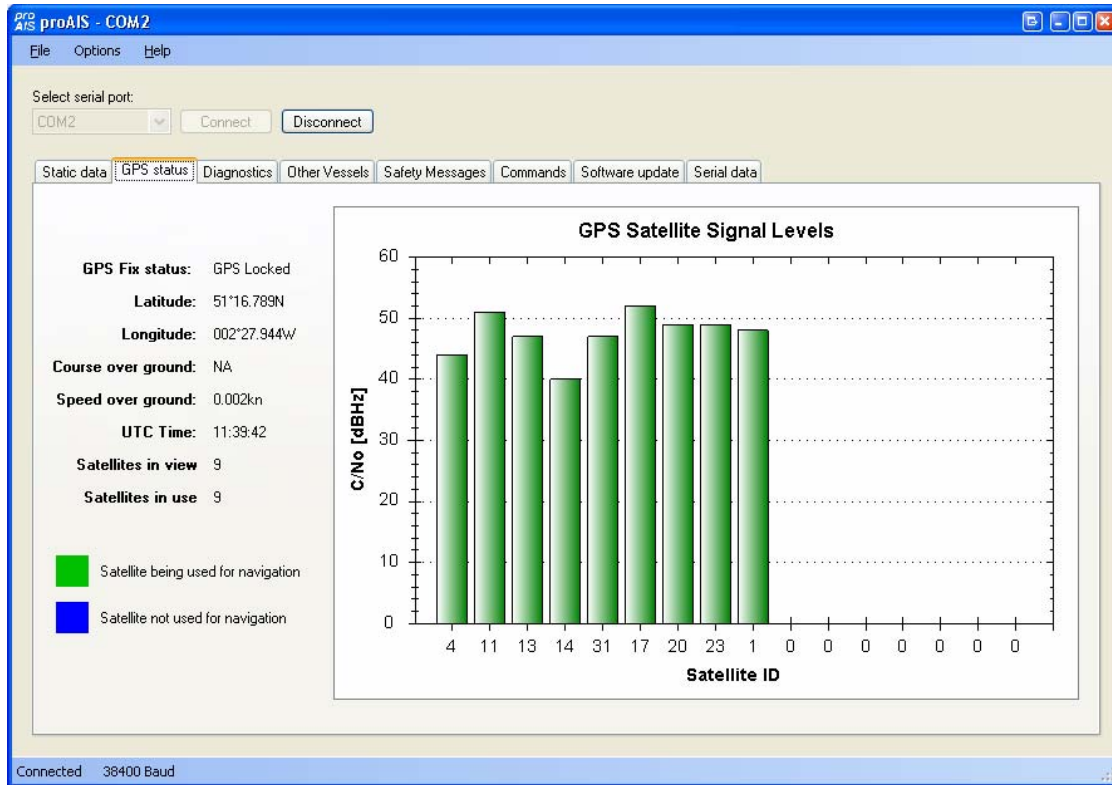
- A warning will be displayed asking you to verify the MMSI number. Please check the number displayed is correct before proceeding. If the number is incorrect click the 'No' button to cancel programming of the MMSI:



- Click the 'Yes' button if the MMSI is correct. If you select 'No' the static data will not be updated and you can correct the MMIS before proceeding.
- The static data tab will be updated to show the newly programmed vessel information. The MMSI number will be displayed with a grey background to indicate that it has been programmed and cannot be changed.

GPS Status tab

This tab shows the status of the internal GPS receiver. If the GPS receiver has position fix then the current position, speed and course are shown. A bar chart of satellite signal strength is also provided.



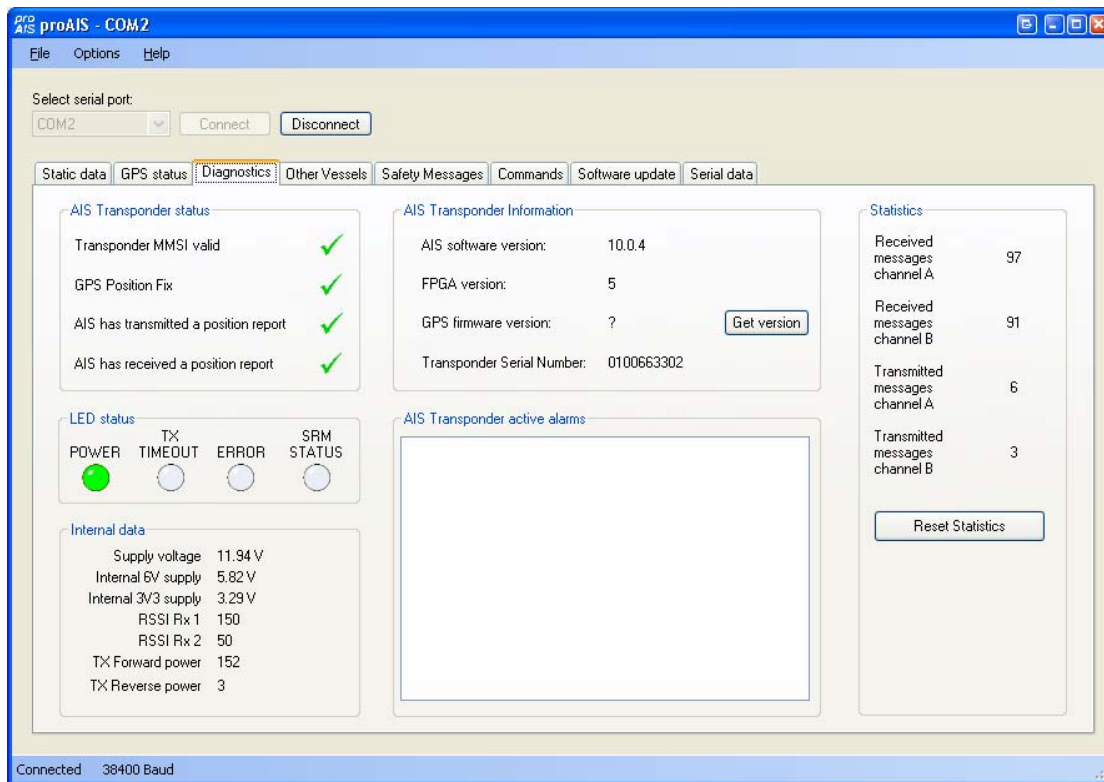
Satellite signal strength bars are shown in green for satellites that are currently being used for navigation. Blue signal strength bars are used to show satellites not currently being used for navigation. Red bars indicate SBAS* (WAAS or EGNOS) satellites used for improved GPS accuracy in some areas. It is normal for the graph to display a combination of green and blue bars, along with Red bars in an area with SBAS coverage.

The information on this tab is intended for use during installation of the AIS Transceiver in order to verify connection of the GPS antenna.

**Support for SBAS (WAAS / EGNOS) is dependant on the configuration and software version in your Transceiver.*

Diagnostics tab

The diagnostics tab shows key status information from the AIS Transceiver. This information can be used to quickly verify that the Transceiver has been installed correctly and is operational.



AIS Transceiver Status

- A tick next to the items in this area indicates correct operation.
- If a red cross is shown then some action may be required:
 - Transceiver MMSI valid has a red cross - check the MMSI of the unit is configured by selecting the 'Static Data' tab and verifying that a valid MMSI has been entered. If the MMSI is 000000000 then it has not been programmed.
 - GPS position fix has a red cross - the GPS has not acquired a position fix. Please allow up to 5 minutes for a fix to be acquired. If the red cross is still present check the GPS antenna is correctly connected and has a clear view of the sky.
 - AIS has transmitted a position report has a red cross - the unit has not yet transmitted its position. Please allow up to 5 minutes after GPS fix has been acquired for the green tick to appear. If the red cross is still present after this time please refer to the active alarms section below. The AIS will not transmit unless it has acquired GPS fix and has a valid MMSI programmed.
 - AIS has received a position report - a position report from another vessel has been received. If there is no other AIS equipped vessel in the area the red cross will remain against this item. If other AIS equipped vessels are present and the red cross remains please check the VHF antenna connections.

AIS Transceiver Active Alarms

Any active alarm messages generated by the AIS unit are shown here.

- Note that alarms may take up to 1 minute to clear from this display once their source has been corrected.
- It is normal for GPS related alarms to be displayed when the AIS is first switched on. These alarms will clear once GPS position fix is acquired.

- Please refer to the troubleshooting section for a description of each alarm message.

AIS Transceiver Information

This section shows technical information about the connected AIS Transceiver including software and firmware version information. Depending on the AIS software version the ability to display the GPS firmware version may not be present. If shown clicking the 'Get version' button will retrieve the GPS firmware version. Please note that this operation may result in a temporary loss of GPS fix.

LED Status

This display may not be enabled depending on the software version of your AIS Transceiver.

This section mirrors the LED display on the front of the AIS Transceiver and is useful when the unit is installed in a location where the physical LEDs are not easily visible.

Internal Data

This display may not be enabled depending on the software version of your AIS Transceiver.

This section provides internal diagnostics data from you're AIS Transceiver. Your dealer may request this information if diagnosing any problems with your installation.

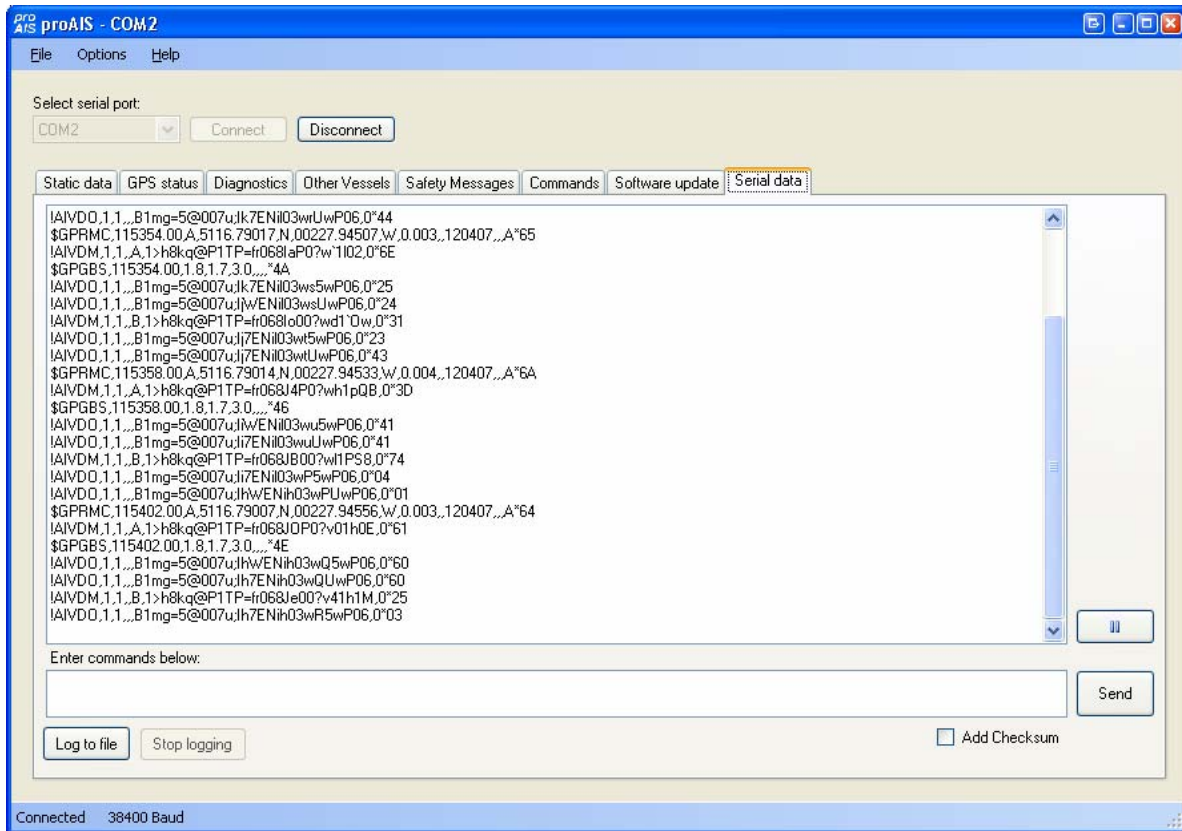
Statistics

This display may not be enabled depending on the software version of your AIS Transceiver.

This section shows the number of AIS messages received and transmitted on each of the AIS channels. You can use this information to verify that the Transceiver is successfully receiving and transmitting data when other AIS equipped vessels are in range.

Serial data tab

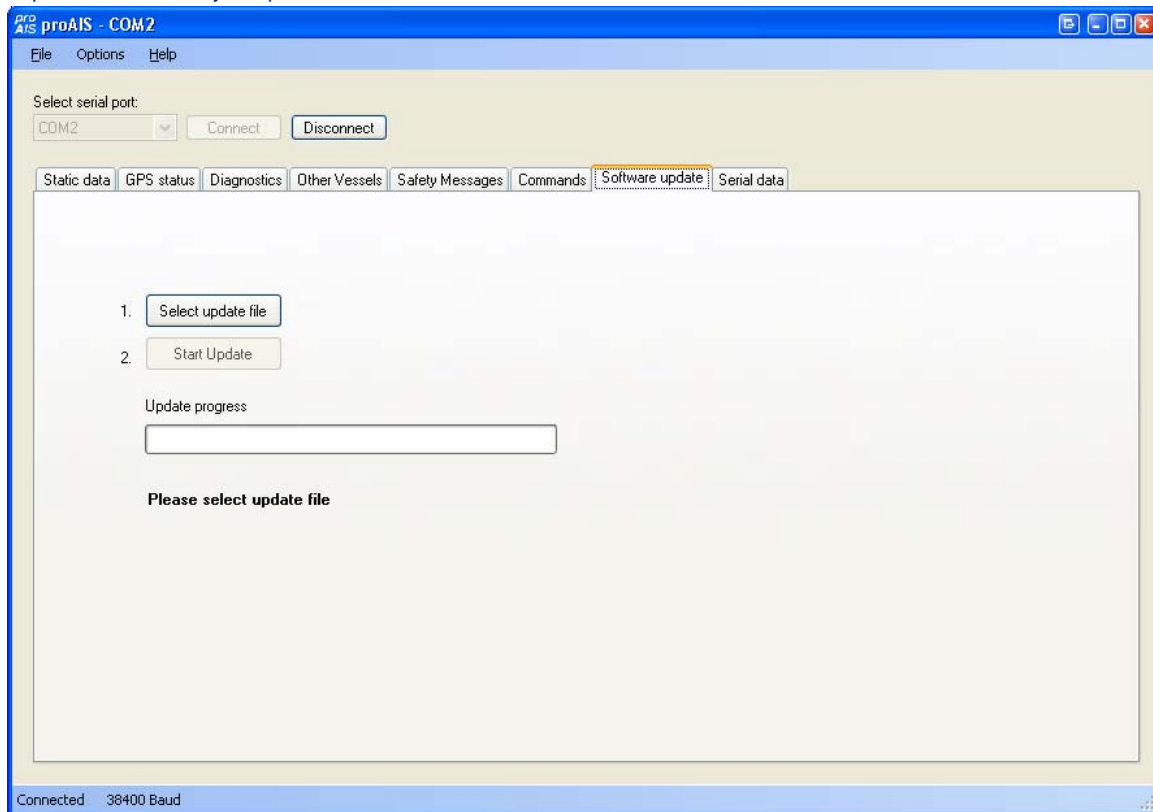
This tab shows the raw NMEA 0183 serial data being output by the AIS. A typical display is shown below:



- NMEA command sentences can be sent to the unit by entering them in the lower text box and clicking the 'Send' button. proAIS will calculate and append the NMEA checksum to the sentence if the "Add Checksum" check box is checked. In this case enter a NMEA sentence without including the asterisk that precedes the checksum.
- Serial data can be logged to a file by clicking the 'Log to file' button and entering a file name and location in the dialog box.
 - Logging to file will continue if other tabs are selected after logging has been started.
 - Logging to file will cease when the 'Stop logging' button is clicked.
- The serial data display can be paused by clicking the pause button at the bottom right hand side of the data window. Clicking the button a second time will resume output of the live serial data.
- Transmitted AIVDO messages are indented for easy identification.

Software update tab

This tab provides the facility to update the AIS Transceiver's internal software.



CAUTION:

Only perform a software update using an update file intended for use with the AIS500 product. Do not interrupt the power to the unit or disconnect from the PC during the update process unless instructed to do so by the proAIS application.

1. Click the 'Select update file' button and navigate to the update file. This will have the extension .hex.
2. Click the 'Start update button'.
3. Follow the instructions provided underneath the update progress bar.
4. Depending on the AIS software version you may be requested to power cycle the unit at two points in the process. Turn the power supply to the AIS off and back on again at these requests. Do not disconnect the serial connection to the PC.
5. Once the 'Update completed' is displayed the AIS is ready for use.
6. Please verify the information shown on the static data tab is correct after any software update.

Other vessels tab

This tab shows information received from other AIS equipped vessels in the area.

- The MMSI of each vessel is shown.
 - Vessels equipped with Class A AIS have the MMSI displayed in black text.
 - Vessels equipped with Class B AIS have the MMSI shown in blue text.
- The name and call sign of each vessel is shown.
 - Due to the way AIS operates this information may take some time to appear.
- The speed in knots, course in degrees, decimal latitude and longitude are shown for each vessel.
- The approximate distance to each vessel is shown when the connected unit has a GPS fix. Please note that this is an **approximate** distance for indication only.
- The class of the AIS equipment on each vessel is displayed as A or B.
- Columns can be sorted into ascending or descending order by clicking on the column heading.

The screenshot shows the 'AIS proAIS - COM1' software window. At the top, there is a menu bar with 'File' and 'Help'. Below that is a 'Select serial port:' section with a dropdown menu set to 'COM1', a 'Connect' button, and a 'Disconnect' button. The main area has several tabs: 'Static data', 'GPS status', 'Diagnostics', 'Serial data', 'Software update', and 'Other Vessels' (which is selected). The 'Other Vessels' tab displays a table with the following columns: MMSI, Name, Call Sign, Speed (kn), Course, Latitude, Longitude, Distance (nm), and Class. The table contains 25 rows of vessel data.

MMSI	Name	Call Sign	Speed (kn)	Course	Latitude	Longitude	Distance (nm)	Class
0			0.1	158.3	50.85972	-1.12547	56.57	A
209084000	GAS LEGACY	C4EL2	0	246	50.84167	-1.3325	50.26	A
210286000			0	0.1	50.83853	-1.32951	50.46	A
219047000			0	0	50.71783	-1.05743	63.08	A
227273000	NORMANDIE	FNND	0	135	50.81133	-1.097	58.89	A
232001340			1.5	53	50.72407	-1.48471	49.93	A
232002070			0	202.3	50.83438	-1.32361	50.78	A
232002163			10.6	249.3	50.75581	-1.38188	51.69	A
232003081	CITY OF CHICHESTER	MXGH3	12.1	249	50.76446	-1.34448	52.51	A
232003401	RED JET 3	MYKV3	0	20.3	50.76312	-1.2959	54.05	A
232003592			6.7	127	50.73034	-1.06989	62.28	A
232613000	NEDLLOYD HUDSON	MZER8	12.9	139.8	50.81726	-1.29678	52.19	A
234509000			3.9	317.6	50.74576	-1.51742	48.13	A
235000366			10.9	341.2	50.78661	-1.10762	59.28	A
235002514	ST CLARE	ZNNR5	10.7	70	50.77367	-1.1145	59.46	A
235003303			12.8	142.2	50.83599	-1.31331	51.06	A
235004650			9.9	76	50.4611	-1.31333	65.82	A
235006680			12.4	138	50.84786	-1.33743	49.91	A
235007472	FREEDOM 90	MLMJ9	0	98	50.785	-1.1	59.58	A
235007473	ISLAND EXPRESS	ZIRL9	0	47	50.73283	-1.1585	59.38	A
235012119			0.2	28.1	50.79132	-1.11433	58.92	A
235031241	TENAX	MKSF5	0.1	191.8	50.83453	-1.32342	50.78	A
235031616			0	0	50.79283	-1.1075	59.1	A
235031617	ST CECILIA	MFJT9	12.7	244	50.75933	-1.17433	57.99	A
235031622			25.8	221.7	50.76667	-1.12347	59.39	A
244210000			0	248	50.70718	-1.04522	63.82	A
247007000	COSTANZA WONSILD	ICWG	0	244.4	50.83772	-1.32837	50.52	A

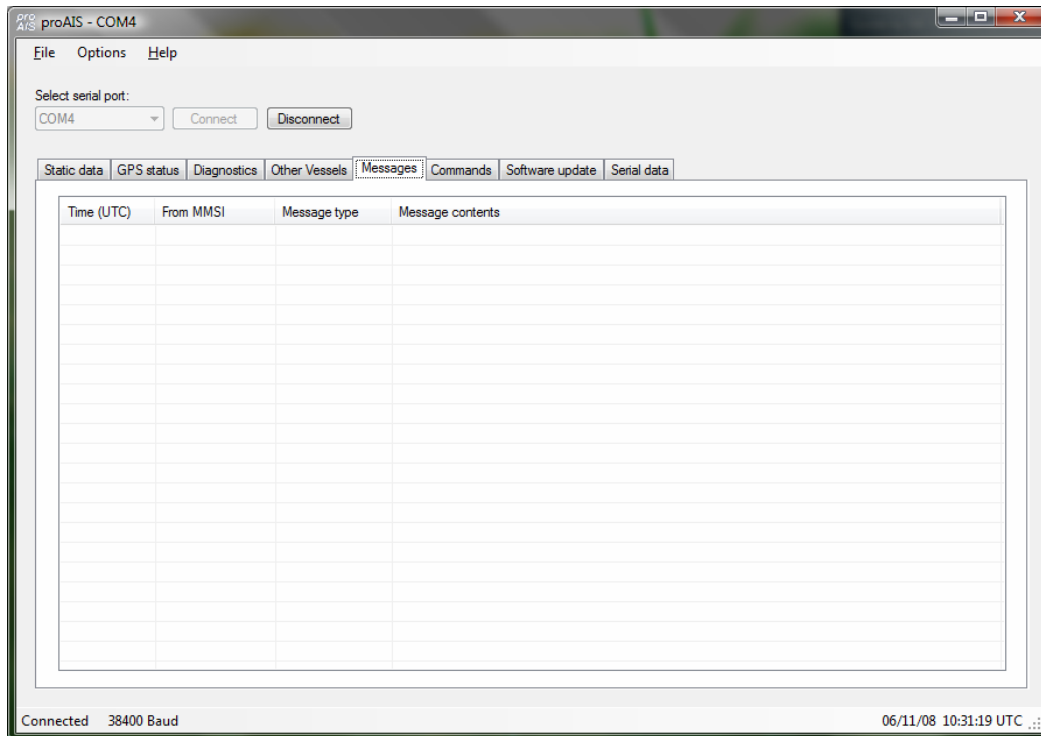
At the bottom of the window, it says 'Connected'.

Messages tab

This tab displays safety related messages received from other AIS equipped vessels in the area. The tab displays two message types:

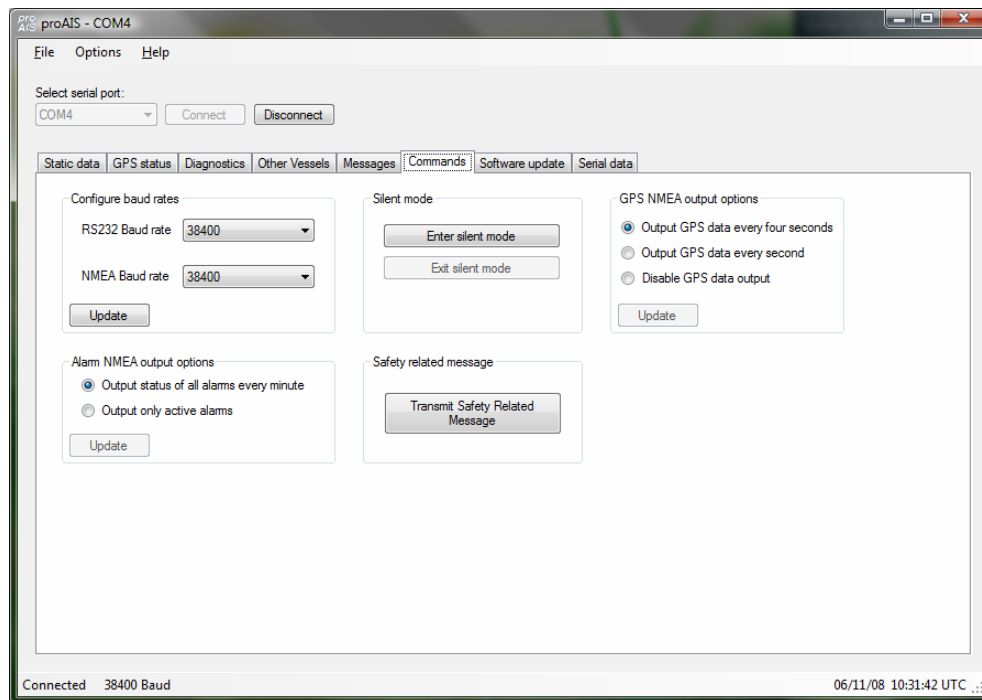
- Addressed Safety Related Message (VDL Message #12).
- Broadcast Safety Related Message (VDL Message #14).

The UTC time the message was received, along with the MMSI of the sender will be displayed along with the text contents of each message.



Commands tab

The commands tab provides access to software controlled features of the AIS500 Transceiver. Depending on the AIS software version the following commands may be available:



- Silent mode
 - Buttons to enter / exit silent mode. In Silent mode the transmitter is disabled and no position reports are transmitted by the unit. Other AIS users will be unaware of your position in this mode so it should be used with caution and only where allowed by local regulations.
- Safety related message
 - A button is provided to trigger the transmission of a Safety Related Message. Clicking this button will display a confirmation dialog box. Clicking 'OK' in the confirmation dialog box will cause a Broadcast Safety Related Message with the contents "MAYDAY MAYDAY" to be transmitted to all other AIS equipped vessels and base stations in the area.
- Configure baud rates
 - Baud rates for the RS232 and RS422 (NMEA 0183) communications ports can be set here. The default value is 38400 & should be used where possible. The 'Update' button should be clicked to send new settings to the AIS Transceiver.
- GPS output options
 - By default the AIS Transceiver will output its current GPS position data every four seconds via the RS232 and NMEA serial interfaces. This information is sent using the GPRMC sentence and can be used to provide your vessels GPS position to a chart plotter connected to the unit. A higher position update rate (once per second) is available as an option and will result in a more accurate display of your vessels position, speed and course on a connected chart plotter. To use this option select the "Output GPS data every second" option and click 'Update'. It is also possible to disable GPS NMEA data output from the unit (if you have another source of GPS data).
- Alarm output options
 - By default the AIS Transceiver will output the status of all alarms every minute using AIALR sentences. The unit can optionally be configured to only output active alarms using the radio buttons. The 'Update' button should be clicked to send new settings to the AIS Transceiver.

Troubleshooting guide

Problem	Possible cause	Solution
General		
No AIS is detected	The AIS is not connected to the serial port selected from the drop down menu	Check the number of the serial port the AIS is connected to and retry
	The AIS is not powered	Check that the power supply is connected and switched on
	The serial cable is damaged or faulty	Try an alternative serial cable
Can not communicate with unit	The AIS is not connected to the serial port selected from the drop down menu	Check the number of the serial port the AIS is connected to and retry
	The Serial cable is damaged or faulty	Try an alternative serial cable
Static Data tab		
No static data is displayed	The unit has not yet been configured	Follow instructions in the Static data section to configure the unit
The MMSI can not be changed	The MMSI has already been programmed	The MMSI can only be programmed once. If it is incorrect please contact your dealer.
The static data is incorrect	Data was entered incorrectly	Re-enter the static data and save to the AIS. The MMSI cannot be updated.
GPS tab		
No GPS position information is displayed (or graph shows only blue bars)	The unit has not acquired GPS fix	<p>Check the GPS antenna connections and power cycle the AIS unit.</p> <p>Check the GPS antenna location and make sure it's view of the sky is not obstructed</p> <p>Check the AIS installation manual against the specification of your GPS antenna</p>
	The GPS antenna is not correctly connected	
	The GPS antenna does not have a clear view of the sky	
	GPS antenna is unsuitable for use with AIS	
Diagnostics tab		
Red cross against a status item	Unit configuration or antenna connections	See Diagnostics tab section of this user guide for advice on each item
Active alarm shown: Position sensor fault OR SOG data fault OR COG data fault OR	The unit has not acquired GPS fix	<p>Wait at least five minutes for the unit to acquire GPS position fix</p> <p>Follow troubleshooting guide for GPS tab</p>
Active alarm shown: VHF Antenna VSWR fault	The VHF antenna is not connected or is not suitable for use with the AIS	<p>Check the VHF antenna connections.</p> <p>Check the AIS installation manual against the specification of your VHF antenna</p>
Active alarm shown: 12V Power supply fault	The power supply to the AIS is outside the specified range.	Check the power supply voltage to the AIS against that specified in the installation manual.

Problem	Possible cause	Solution
<p>Active alarm shown:</p> <p>Channel A Noise fault OR Channel B Noise fault</p>	<p>The AIS cannot transmit because the background noise level is too high</p>	<p>Check the VHF antenna connections.</p> <p>Check the AIS installation manual against the specification of your VHF antenna.</p> <p>In very busy shipping channels this alarm may appear temporarily. This is normal operation for Class B AIS.</p>
<p>Active alarm shown with message not listed here</p>	<p>The VHF antenna is not connected or is not suitable for use with the AIS.</p> <p>AIS has an internal fault.</p>	<p>Check the VHF antenna connections.</p> <p>Check the AIS installation manual against the specification of your VHF antenna.</p> <p>Please contact your dealer.</p>

