

## ST70 instrument software v3.x. Latest features



### Warning: Read the user manual

Before using the software read the safety information contained within the user reference manual on the CD-ROM supplied with your product.



### Warning: Ensure safe navigation

This product is intended only as an aid to navigation and must never be used in preference to sound navigational judgment. Only official government charts and notices to mariners contain all the current information needed for safe navigation, and the captain is responsible for their prudent use. It is the user's responsibility to use official government charts, notices to mariners, caution and proper navigational skill when operating this or any other Raymarine product.

## ST70 instrument latest features

This document describes features which have been added to the ST70 instrument with software version 3.x.

**Note:** Please note that the documentation supplied with your unit is still valid. The latest version of any user documentation can be downloaded from [www.raymarine.com](http://www.raymarine.com).

### New features

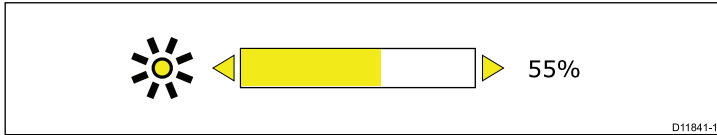
- **Brightness adjustment.** The brightness is now adjusted in 10% increments, with fine adjustment also available.
- **System brightness and color.** The **Display settings** menu has been updated with a new System brightness and color feature. This allows the ST70 brightness and color settings to be shared with connected ST70 and ST70+ units.
- **Color palettes.** The color palettes have been enhanced to include a Red/Black palette for night time use and an inverse palette for enhanced visibility.
- **Rolling road frame.** A rolling road feature has been added. This provides course deviation and navigation information. It can be included as part of your instrument pages using the page setup menu.
- **Rudder bar graph.** A rudder bar has been added. It can be included as part of your instrument pages using the page setup menu.
- **Man Overboard alarm.** The MOB alarm has been updated to include BTW, DTW and Time elapsed information.
- **Tridata page template.** A Tridata page template has been added to the list of available page templates. This can be setup and incorporated into your available pages using the page setup menu.
- **Language support.** Finnish, Polish and Portuguese have been added to the languages supported within the user interface.
- **Alarm clock.** The method of entry for the alarm time has been updated. This can be accessed through **Display Settings > Timer** menu.
- **Language support.** Finnish, Polish and Portuguese have been added to the languages supported within the user interface.
- **Analog speed dials.** Speed dials now automatically scale to a range appropriate to the speed of the vessel.

- **DST transducer speed calibration.** A factory reset at the ST70 will now reset the calibration of the DST transducer.

## User information updates

### Setting the screen brightness

1. Press the **POWER** button to display the brightness level.



2. Use the **LEFT / RIGHT** arrows to adjust the screen brightness.
  - A momentary press will increment the brightness by 10%.
  - Press and hold for fine adjustment.
3. Press **ENTER** to accept the new brightness setting.

### Display settings



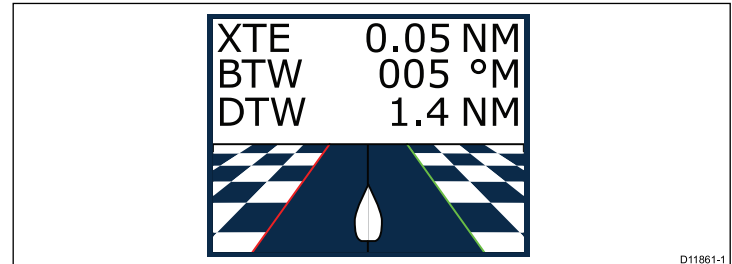
#### MENU > Display Settings

Menu item / Description	Settings / Operation
Units. Set units of measure	
Speed	KTS, MPH, KM/H

Menu item / Description	Settings / Operation
Distance	NM, KM, SM
Depth	FEET, FATHOMS, METRES
Wind Speed	KTS, M/S
Heading	TRUE, MAG
Flow Rate	G/H (UK), G/H (US), LTR/H
Temperature	°F, °C
Pressure	PSI, BAR, KPA
Volume	GAL (US), GAL(UK), LTR
Engines	Number of engines, 1-5
Batteries	Number of batteries, 1-5
Fuel Tanks	Number of fuel tanks, 1-5
<b>Response</b> Affects the sensitivity of the instrument to rapid changes. This can help to stabilise (damp) the display if readings are fluctuating rapidly.	<ul style="list-style-type: none"> <li>• Speed</li> <li>• Depth</li> <li>• Wind Speed</li> <li>• Wind Angle</li> <li>• Heading</li> </ul>
<b>Rollover</b> Rollover will automatically cycle the instrument display between the available pages.	<ul style="list-style-type: none"> <li>• Off.</li> <li>• 1 to 10 seconds.</li> </ul>

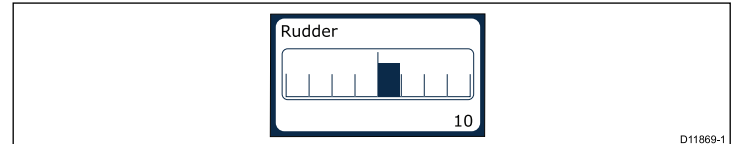
Menu item / Description	Settings / Operation
<b>Timer</b> (Alarm clock)	<b>Alarm Clock.</b> <ul style="list-style-type: none"> <li>• On / Off</li> <li>• Alarm time</li> </ul>
<b>Time and date</b>	<ul style="list-style-type: none"> <li>• Time Offset. Local time expressed as hours <math>\pm</math> UTC.</li> <li>• Time Format</li> <li>• Date Format</li> </ul>
<b>Brightness</b>	Set the display brightness level
<b>System brightness/Color</b> Control brightness and color settings for all connected ST70 and ST70+ units.	<ul style="list-style-type: none"> <li>• This display — Color and brightness settings affect this unit only.</li> <li>• All displays — Color and brightness settings affect all connected ST70 and ST70+ units.</li> <li>• Group names — Groups associated with ST70+ instruments.</li> </ul>
<b>Colors</b>	Select from the available color palettes: <ul style="list-style-type: none"> <li>• Mode 1, 2 and 3</li> <li>• Red/Black</li> <li>• Inverse</li> </ul>

## Rolling road frame



The rolling road provides waypoint and course deviation information.

## Bar graph frames



The rudder bar is an example of a bar graph frame.