



*Classic Owner's manual*

---

All information included in this manual is for information purposes only and cannot be used and/or relied upon for any other purpose. The information contained herein is designed to be as comprehensive as possible. Highfield Inflatables reserves the right, however, to make changes at any time, without notice, to models, equipment, specifications and availability. Indicated measurements may vary by +/- 3% or +/- 5% for weights. The availability of models, equipments and options may vary from country to country . The boats photographed in this manual may differ from the actual models.

## Content

Introduction .....	2
Warranty Message .....	2
Warranty Information .....	3
Safety alerts .....	4
Safe boating recommendations .....	5
Craft data .....	6
Boat components .....	8
Transporting .....	8
Operation .....	8
Outboard motor .....	12
Maintenance .....	12
Storage .....	14
Service assistance .....	14

## Introduction

Congratulations on your purchase of a Highfield inflatable. This model is the result of Highfield's vast experience in production of fine pleasure boats. It represents the high degree of craftsmanship and reliability that are the Highfield's commitment. You have made a wise investment by purchasing a Highfield inflatable, we are convinced it will bring you many years of fun on the water and boating pleasure.

To ensure that you gain maximum satisfaction from your Highfield boat, please read this owners' manual carefully. It contains all the safety and operation instructions that you need to get the most out of your Highfield dinghy.

The operator, passengers and craft are governed by local, national and when applicable, international rules and regulations of the waterways. If you are not familiar with these rules and regulations, please contact your local authorities. Many accidents involve inexperienced operators. In fact, many operators who have been involved with accidents do not even have a current boating license. Make sure that you are qualified and that you only lend your boat to other qualified operators.

Please keep this manual in a safe place and hand it over to the new owner if you sell the dinghy.

## Warranty Message

The product you have purchased comes with a limited warranty from Highfield Inflatables. The terms of the warranty are set forth in the Warranty Information section of this manual. The warranty statement contains a description of what is covered, what is not covered and the duration of coverage. Please review this important information. The description and specifications contained herein were in effect at the time this manual was approved for printing. Highfield Inflatables, whose policy is one of continued improvement, reserves the right to discontinue models at any time, to change specifications, designs, methods, or procedures without notice and without incurring obligation.

Record your Hull Identification Number (HIN). The HIN is located on the transom plate of your boat. You will need this information to obtain parts, warranty service or provide information if your inflatable boat is stolen.

Purchase date		Dealer's stamp
Dealer details		
Name		
Address		
Phone		
Boat details		
Model		
HIN		

## Warranty Information

### HIGHFIELD BOATS – RETAIL LIMITED WARRANTY

#### WHAT IS COVERED

Highfield boats are warranted to be free of defects in material and workmanship during the period described hereafter:

#### DURATION OF COVERAGE

The entire vessel is covered for a period of two (2) years from the date the product is sold.

The structural hull of the vessel is covered by a five (5) year warranty.

#### CONDITIONS THAT MUST BE MET IN ORDER TO OBTAIN WARRANTY COVERAGE

Warranty coverage is available only to customers that purchase from an authorized Highfield dealer. Routine maintenance outlined in the Owner's manual must be performed in a timely manner in order to maintain warranty coverage. If the retail customer performs this maintenance, Highfield Boats reserves the right to make future warranty coverage contingent on proof of proper maintenance.

#### WHAT HIGHFIELD BOATS WILL DO

Highfield Boats sole exclusive obligation under this warranty is limited to, at our option, repairing a defective part, replacing such part or refunding the purchase price of the Highfield Boats product. The repair, replacement of parts, or the performance of service under this warranty does not extend the life of this warranty beyond its original expiration date.

#### HOW TO OBTAIN WARRANTY COVERAGE

The customer must provide Highfield Boats with a reasonable opportunity to repair, and reasonable access to the product for warranty service. Warranty claims shall be made by delivering the product for inspection to a Highfield Boats dealer authorized to service the product. If the service provided is not covered by this warranty, purchaser shall pay for all related labor and material, and any other expenses associated with that service. Purchaser shall not, unless requested by Highfield Boats, ship the product or parts of the product directly to Highfield Boats. Proof of registered ownership must be presented to the dealer at the time warranty service is requested in order to obtain coverage Highfield Boats. Proof of registered ownership must be presented to the dealer at the time warranty service is requested in order to obtain coverage.

#### WARRANTY EXTENSION

Warranty extension becomes available upon proper registration of the product by the owner via Highfield Boats warranty website: <http://warranty.highfieldboats.com> Product must be registered within sixty (60) days from the date the product is purchased.

Warranty extension covers the ability of the tube hold air to ISO 6185 (airtightness test).

Duration of the coverage:

Tube made of ORCA® (Hypalon) fabric: ten (10) years

Tube made of Valmex® (PVC) fabric: five (5) years

Warranty extension does not apply if the vessel is used for rental or commercial use.

## WHAT IS NOT COVERED

This limited warranty does not include damage due to misuse, abuse, negligence, improper or inadequate storage or transportation, or to any Highfield boat which is used in a manner contrary to directions or instructions indicated in the Highfield Owner's Manual.

The warranty does not cover routine maintenance items, adjustments, normal wear and tear, puncture, discoloration, oxidation, abrasion, mildew or damages due to theft, loss, modification or alteration.

Wearing parts including but not limited to rubbing strake, keel guards, ropes are not covered by the warranty.

This warranty shall be ineffective if the boat has been operated without proper inflation, or with an outboard motor which exceeds the maximum horsepower rating listed on the serial plate attached to the transom.

Powder coating condition is not covered by our warranty due to the specific exposed nature of the product. For best long term protection, ensure that all surfaces are rinsed with fresh water after every use and are cleaned immediately of any substances that may stick to the paint surface and cause discoloration or damage. We recommend scratches and dents to be repaired to avoid blistering or detachment of the coating from the hull.

Use of the product for racing or other competitive activity voids the retail warranty.

Expenses related to haul-out, launch, towing, storage, transportation, telephone, rental, inconvenience, slip fees, insurance coverage, loan payments, loss of time, loss of income, or any other type of incidental or consequential damages are not covered by this warranty.

#### TRANSFER OF WARRANTY

The limited warranty is transferable to a subsequent purchaser, but only for the remainder of the unused portion of the limited warranty. This does not apply if the vessel is used for rental or commercial use.

To transfer warranty please send an email with the below information to [warranty@highfieldboats.com](mailto:warranty@highfieldboats.com)

- Copy of the sale agreement
- HIN number of the craft
- Name, address, email address of new owner

#### Safety alerts

This manual uses the following safety alerts to draw your attention to special safety instructions that should be followed.

Degree of hazard and corresponding safety labels:

#### Danger

Denotes that an extreme intrinsic hazard exists which would result in high probability of death or irreparable injury if proper precautions are not taken.

#### Warning

Denotes that a hazard exists which can result in injury or death if proper precautions are not taken.

### Caution

Denotes a reminder of safety practices or directs attention to unsafe practices which could result in personal injury or damage to the craft or components or to the environment.

### Safe boating recommendations

#### 1. Always wear a life jacket

Local authorities require that you carry an approved personal floatation device, or life jacket, for each person aboard your vessel. We recommend wearing a life jacket at all times while boating as you never know when an accident may occur. Statistics show nine of ten drowning victims may have survived a capsizing or fall overboard if they had been wearing a life jacket, so choose a life jacket you will wear.

#### 2. Use the kill switch lanyard

The operator of the boat must wear at all time a kill switch lanyard while driving. In the event of accidental ejection or lose of balance, the boat will shut off automatically, possibly saving driver's life or someone else's. Tiller handle outboards and some remote control units are equipped with a lanyard stop switch. A lanyard stop switch can be installed as an accessory on the dashboard or adjacent to the operator's position.

#### 3. Protect people in the water

Always slow down and exercise extreme caution any time you are boating in area where there might be people in the water. Please remember that even if the outboard gear shift is in neutral position the propeller will continue to rotate slightly but enough to cause serious injury.

#### 4. Know your boat

Knowing your boat is the foundation of good seamanship, which is simply the skill of managing a boat and encompasses; navigation, safety, boat handling, line handling, anchoring, troubleshooting engine problems, and appropriate emergency response.

#### 5. Take a boating safety course

Eighty five percent of boating fatalities involve operators who did not have formal boating education. A boating course will teach you the basics of seamanship mentioned above. The knowledge you will gain by taking a boating safety course will never be wasted.

#### 6. Boat sober

Using alcohol is even more dangerous on the water than on land because the marine environment accelerates impairment. In boating deaths attributed to alcohol use, over half capsized or fell overboard. Besides the safety risks, boating while intoxicated, or BUI, is illegal and heavy penalties are enforced by both state and federal agencies.

#### 7. Know the navigation rules

Aids to navigation such as buoys and day boards help us navigate potentially dangerous waters. Learn to read nautical charts and keep them on your vessel to become familiar with the area in which you boat. Taking a boating safety course is the next step, where you will learn to navigate using charts, GPS, RADAR, and a compass.

### Danger

When operating, passengers must avoid standing up or hanging feet outside of the boat. Leaking fuel is a fire hazard, inspect fuel system regularly. Shut off the engine before boarding from the water.

### Warning

Shall the operator or passenger fall out of the boat, the possibility of serious injury or death from being run over by the boat can be greatly reduced by stopping the engine immediately. Always properly connect both end of the stop switch lanyard to the stop switch and the operator.

### Caution

Passengers must use suitable PFDs (Personal Flotation Device). Special PFDs are designed for children or watersport activities.

### Craft data

#### 1. Boat specifications

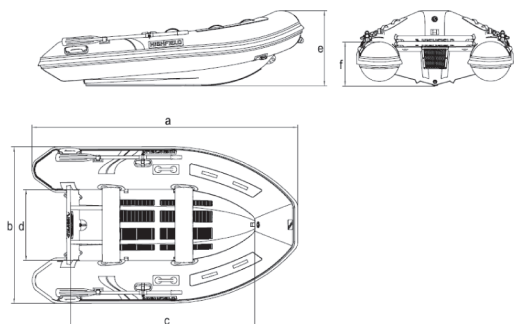
Description	Model												
	260	8.5	290	9.5	310	10	340	811	360	12	380	12.5	
<b>Length</b>	a	2.6 m	8' 6"	2.9 m	9' 6"	3.18 m	10' 5"	3.48 m	11' 5"	3.66 m	12'	3.8 m	12' 6"
<b>Beam</b>	b	1.71 m	5' 7"	1.71 m	5' 7"	1.71 m	5' 7"	1.71 m	5' 7"	1.71 m	5' 7"	1.71 m	5' 7"
<b>Inside length</b>	c	1.85 m	6' 1"	2.05 m	6' 9"	2.26 m	7' 5"	2.53 m	8' 4"	2.73 m	8' 11"	2.90 m	9' 6"
<b>Inside width</b>	d	0.79 m	2' 7"	0.79 m	2' 7"	0.79 m	2' 7"	0.79 m	2' 7"	0.79 m	2' 7"	0.79 m	2' 7"
<b>Bow height</b>	e	830mm	33"	830mm	33"	830mm	33"	820mm	32"	820mm	32"	820mm	32"
<b>Stern height</b>	f	500mm	20"	500mm	20"	500mm	20"	515mm	20"	515mm	20"	515mm	20"
<b>Weight</b>		40 kg	88 lb	49 kg	108 lb	60 kg	132 lb	62 kg	137 lb	68 kg	150 lb	72 kg	159 lb
<b>Deadrise</b>		15°		15°		15°		15°		15°		15°	
<b>Max passenger</b>		3+1		4		5		5+1		6		6+1	
<b>Max load</b>		430kg	948 lb	480kg	1058 lb	550kg	1212 lb	620kg	1367 lb	650kg	1433 lb	690kg	1521 lb
<b>Max HP</b>		8 HP		10 HP		15 HP		20 HP		25 HP		25 HP	
<b>Shaft</b>		Short		Short		Short		Short		Short		Short	
<b>Tube dia</b>		440 mm	17"	440 mm	17"	440 mm	17"	440 mm	17"	440 mm	17"	440 mm	17"
<b>Tube material</b>		Valmex® or ORCA®		Valmex® or ORCA®		Valmex® or ORCA®		Valmex® or ORCA®		Valmex® or ORCA®		Valmex® or ORCA®	
<b>Airtight chambers</b>		3		3		3		3		3		3	

Valmex® PVC material manufactured by Mehler Technologies

ORCA® Hypalon material manufactured by Pennel & Flipo

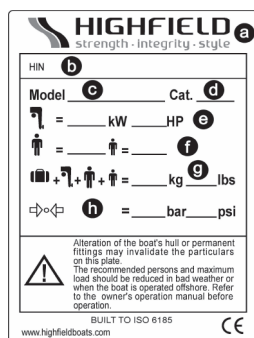


## 2. General arrangement



## 3. Manufacturer's plate

The manufacturer's plate is located on the inside of the boat transom.



- a- Name of manufacturer
- b- HIN: Hull Identification Numbers
- c- Model
- d- Category
- e- Maximum motor power
- f- Maximum number of persons
- g- Maximum load capacity
- h- Recommended working pressure

Boat design category according to ISO 10240:

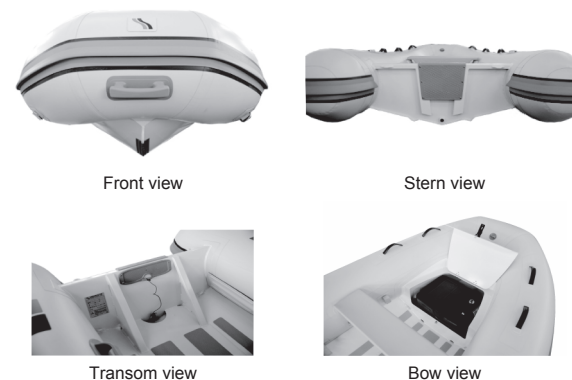
Category A: Craft designed to operate in winds that may exceed wind force 8 (Beaufort scale) and in significant wave heights of 4m and above, and is largely self-sufficient. Abnormal conditions such as hurricanes are excluded. Such conditions may be encountered on extended voyages, for example across oceans, or inshore when unsheltered from the wind and waves for several hundred nautical miles.

Category B: Craft designed to operate in winds up to force 8 and the associated wave heights. Such conditions may be encountered on offshore voyages of sufficient length, or on coastal waters when unsheltered from the wind and waves for several dozens of nautical miles. These conditions may also be experienced on inland seas of sufficient size for the wave height to be generated.

Category C: Craft designed to operate in winds up to force 6 and the associated wave heights (significant wave height up to 2m). Such conditions may be encountered in exposed inland waters, in estuaries, and in coastal waters in moderate weather conditions.

Category D: This craft is designed to operate in winds up to force 4 and the associated wave heights (occasional maximum waves of 0.5m height). Such conditions may be encountered in sheltered inland waters, and in coastal waters in fine weather.

## Boat components



## Transporting

For optimum handling, the trailer must be properly loaded and balanced.

Keep the center of gravity low for best handling.

Approximately 60 percent of the boat's weight should be positioned on the front half of the trailer and 40 percent in the rear.

The boat should also be balanced from side to side. If the vessel has side-mounted fuel or water tanks and only one side is filled, then this will lend the rig to maneuver poorly. Proper balancing will also extend the life of your trailer's tires.

The boat should be firmly secured with at least two ratchet type straps, attached from the trailer to the stern eyes and one ratchet type strap from the trailer (to the rear), to the bow eye to keep the boat from shifting forward. The bow eye should also be attached to the trailer's winch which is mounted forward of the bow.

Make sure you have sufficient clearance to avoid damaging outboard or boat during transportation.

Classic models can be accommodated / transported on a roof rack. We recommend the boat to be protected from the roof rack that could damage the tube material. Boat should be stowed upside-down. Oars, bench seat and equipments should be removed from the boat. Boat must be secured using reliable nylon tie-down straps with cam-buckles.

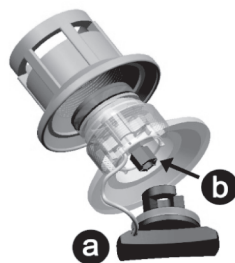
## Operation

### 1. Pre-operation check list

- Check the pressure level in each chamber using a pressure gauge. Recommended working pressure is displayed on manufacturer's plate.
- Make sure the outboard motor is securely fastened to the transom.
- Make sure the drain plug is fully functional.
- Check fuel tank level and make sure it suits your plan.
- Start the outboard motor and make sure it stops when the lanyard is disconnected from the switch.
- Make sure that yourself and every passenger are wearing a suitable personal flotation device.

- Make sure there is an extra buoyant device that can be thrown to rescue person in the water.
- Check that the boat is equipped with 2 paddles or oars.
- Check that the boat is equipped with 2 paddles or oars.
- Make sure you respect the maximum load authorized for the boat as described on the manufacturer's plate.
- Make sure the load in the boat is distributed evenly.
- Check that every passenger is securely seated and holds a safe line, grab handle or rope.
- Make sure that there is a 4m towing rope in the boat.
- If boating with passengers, instruct at least one passenger in the basics of boat handling, starting and operation of the outboard motor.
- Make sure that all safety gears are on board ( whistle, floating ropes, waterproof flashlight, first aid kit, fresh water, tool kit...).

## 2. Inflation



a- Valve cap

b- Plunger

To inflate the chamber, first unscrew the valve cap by turning a quarter of a turn counterclockwise. Check that the plunger in the centre of the valve is closed i.e. upper position. If closed i.e. spring compressed, down position, push the plunger down and rotate to the closed position.

Connect the air pump to the valve, rotate the connector into the valve to lock it and start inflating.

Inflate each chamber in turn, do not inflate a chamber completely then move on to the next one. Start with the rear chambers. Repeat procedure until all chambers are evenly inflated to the recommended working pressure. Use air gauge to measure the tube pressure. If you do not have any gauge, press firmly the tube with one finger, if it goes down by about 10mm, the tube pressure is correct.

Inflatable boats can be damaged by extreme internal air pressure. Such pressure can be caused by temperature differences. A boat properly inflated in the morning may become dangerously over-pressurized as the day warms up. The internal pressure can multiply many times as the surface temperature increases and under such conditions, seams can separate and bonded materials can delaminate. Avoid subjecting your inflatable to such conditions by relieving pressure in all chambers of your boat as the day heats up or before leaving the boat exposed to hot midday sun. It is highly recommended that the boat be stored in the shade or under cover when it is not being used.

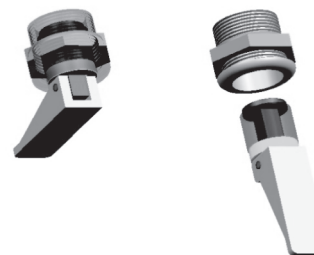
Do not use a compressed air source to inflate the tube or you may compromise the integrity of the seams or internal baffles. Seams or baffle rupture due to non respect of inflation procedure are not covered under the warranty.

Using the boat with under inflated tubes may cause serious damage, including transom cracking.

### Caution

Do not use compressed air source to fill the air chambers. Over inflation may result in seams or diaphragms rupture.

### a- Use of drain plug



Your boat is equipped with a drain plug installed on the transom. When driving the boat, open the plug to get rid of the water on the floor. The water will automatically be drained by venturi effect. When launching the boat or stopping on the water we recommend you to keep the plug sealed. When the boat is lifted, stowed, stored, not used, or transported, drain plug shall remain open to drain any water that could fill the deck.

### Caution

Keep the drain open when the boat is kept outside of the water. The rain water could fill the boat and create stress and damage.

### Danger

Do not open the drain plug when the boat is afloat but not in motion.

### b- Load distribution

Please refer to the maximum number of passengers and load capacity of the boat in this manual or on the manufacturer's plate. Do not exceed the maximum number.

Position the passengers and distribute the load evenly in the boat to help counterbalance the weight of the outboard.

In rough waters, load can be moved forward to ease the motion of the craft.

### c- Performances

To achieve best performance, the boat must plane. If the boat does not plane you may check the following:

- Make sure the bilge / deck is dry, drain the water otherwise.
- Make sure the tube is correctly inflated.
- Make sure you have the correct weight distribution. Sea conditions may require passengers to move forward to the boat to get the boat on plane before they return to their initial positions.

The outboard engine plays a big role in the performance of the boat. Please make sure you use a suitable outboard engine for the boat.

Outboard trim angle can be adjusted to improve planning and general performance. Adjust the position of the trim rod of your motor to define the trim angle of the outboard motor in relation to the transom. Make test runs with the trim set to different angles to find the position that works best for your boat and operating conditions.



Bow down, too much trim-in



Bow up, too much trim-out



Right position

#### d- Towing

Your boat can be towed using the towing bridles located at the bow. Boat must be empty when towed. Remove outboard motor, fuel tank and equipment. No passenger should be onboard. Boat shall be towed at low speed. Make sure to use a tow line that is rated at least 5 times the weight of the boat being towed. Boat should only be towed using the towing eye. Molded handles, lifelines and cleats are not designed to be used for towing.

1.It is recommended that the boat be towed with a bridle arrangement using the D rings on the either side of the bow.

2.An extra safety line should also be attached to the welded on aluminium eye under the bow of the hull.

3.Please note that towed dinghies need to be constantly monitored and especially at night.

4.When a dinghy is towed the conditions may vary quite dramatically so the responsibility for its security rests entirely with the skipper.



#### Warning

No passenger should be onboard. Boat shall be towed at low speed. Make sure to use a tow line that is rated at least 5 times the weight of the boat being towed.

#### e- Lifting

When using a hoist to lift the boat, attach the hoist to the 4 lifting eyes welded to the hull. Empty the boat of all equipment and make sure no passenger is onboard during lift. Make sure the deck and bilge are drained before lifting your boat. Remove the drain plug during the whole time the boat is stowed to allow water to run off. Molded handles, lifelines and cleats are not designed to be used for lifting.



#### f- Beaching

We recommend the boat not to be powered onto the beach, dragged across rocks, sand, gravel or pavement as damage to the fabric and/or hull may result.

#### Outboard motor

Install the outboard motor on the transom so that it is positioned as close to the center as possible. Tighten the transom clamp screws evenly and securely. Occasionally check the clamp screws for tightness during operation of the outboard motor because they could become loose due to engine vibration. Make sure the outboard motor is securely fastened to the transom every time before operation. Always use the kill switch lanyard properly.

Portable tank should be removed from boat when fuelling. Tank should be filled in a ventilated area. Do not smoke onboard.

#### Warning

Overpowering a boat can result in serious injury, death or boat damage. Do not use outboard that exceeds the maximum horsepower given on the motor plate.

#### Maintenance

##### 1. General care

Your inflatable has been especially designed to avoid maintenance problems as far as possible. However, periodic cleaning will help to keep your boat's good condition especially before winter storage. Clean your boat and wash it thoroughly with soapy water. Rinse carefully and check that no dirt or foreign bodies such as shell, sand or fishing hooks are left inside that might deteriorate the fabric. For tar stains use a gentle, non abrasive cleanser such as dishwashing soap, or use a recommended inflatable boat cleaner available from most boat chandlery outlets.

**CAUTION:**

- Do not use abrasive or aggressive chemical compounds
- Warm soapy water is best in most situations
- Do not use any solvents, petrol, etc (PVC models)
- Use solvents sparingly only on Hypalon models
- Test any cleaner on a piece of patch material if in doubt

## 2. Tube repair

Repair Kit contains:

- Fabric patches
- Ready to use tube of special glue

Conditions necessary for a successful repair:

- Humidity max 60%
- Temperature range between 18 and 25 degrees Celsius
- Repairs should not be carried out in direct sunlight, wind or rain
- Repairs should, however, be undertaken in a well ventilated area

**Repair PVC boats:**

Highfield Inflatables that have tubes constructed with Valmex PVC coated fabrics require PU based adhesive and RC hardener. Acetone solvent is recommended to prepare the surface before gluing. Use only recommended solvent and adhesive.

Identify the area to be patched. This can be done by running water over the suspect area or spraying or brushing with soapy water.

If the hole is only small, cut out a round patch of no less than 60mm diameter. Larger holes or cuts will require proportionately larger patches but always ensure you have at least 30mm of patch around the perimeter of the cut or hole and the corners are well radiused.

Next hold the patch on the tube and mark out around it with a pencil.

Clean both surfaces with solvent and spread a thin layer of adhesive over them ensuring there are no lumps. When the first coat is dry to the touch ( about 10 to 15 minutes ) apply a second thin coat. After waiting 5 or 6 minutes, touch the adhesive with the back of your hand. If it no longer appears wet, heat both areas with a hot air gun to re - activate the glue and join the patch to the tube and then clamp or roll the surfaces together. For the best adhesion, roll over the patch with a roller or over the bottom edge of a bottle.

Do not inflate the boat fully for 24 hours.

**Repair Hypalon boats:**

Highfield Inflatables that have tubes constructed with Orca Hypalon coated fabrics cannot be bonded with plastic adhesives or by welding. They require neoprene based glue and RFE hardener. MEK solvent is recommended to prepare the surface before gluing. Use only recommended solvent and adhesive.

Identify the area to be patched. This can be done by running water over the suspect area or spraying or brushing with soapy water.

If the hole is only small, cut out a round patch of no less than 60mm diameter. Larger holes or cuts will require proportionately larger patches but always ensure you have at least 30mm of patch around the perimeter of the cut or hole and the corners are well radiused.

Next hold the patch on the tube and mark out around it with a pencil.

Use a grinder, course sand paper or scratch stone, rough up both the back of the patch and the area marked on the tube.

Clean both surfaces with solvent and spread a thin layer of adhesive over them ensuring there are no lumps. When the first coat is dry to the touch (about 10 to 15 minutes) apply a second thin coat. After waiting 5 or 6 minutes, touch the adhesive with the back of your hand. If it no longer appears wet, heat both areas with a hot air gun to re - activate the glue and join the patch to the tube and then clamp or roll the surfaces together.

For the best adhesion, roll over the patch with a roller or over the bottom edge of a bottle.

Do not inflate the boat fully for 24 hours.

**Danger**

Glue and solvents used for repair are highly flammable. Perform repairs in a well ventilated area. Avoid breathing the vapors, wear protective gears ( goggles, filter respirators, latex gloves).

## 3. Upholstery

Highfield is using marine grade upholstery fabric to offer best resistance to UV and ageing. Periodic washing with mild detergent and warm water is the best way to keep your upholstery look good. Special vinyl cleaner can also be used to remove difficult stains. No fabric can last forever when constantly exposed to the elements. We therefore recommend you to cover your boat when not in use.

**Storage**

When not in use boat should be removed from water.

Before storage the boat should be cleaned and rinsed with fresh water.

Do not cover boat before it is completely dry or mildew could grow under the cover and damage the tube material.

**Service assistance**

For assistance please contact your Highfield dealer and visit Highfield Inflatables website: [www.highfieldboats.com](http://www.highfieldboats.com)